

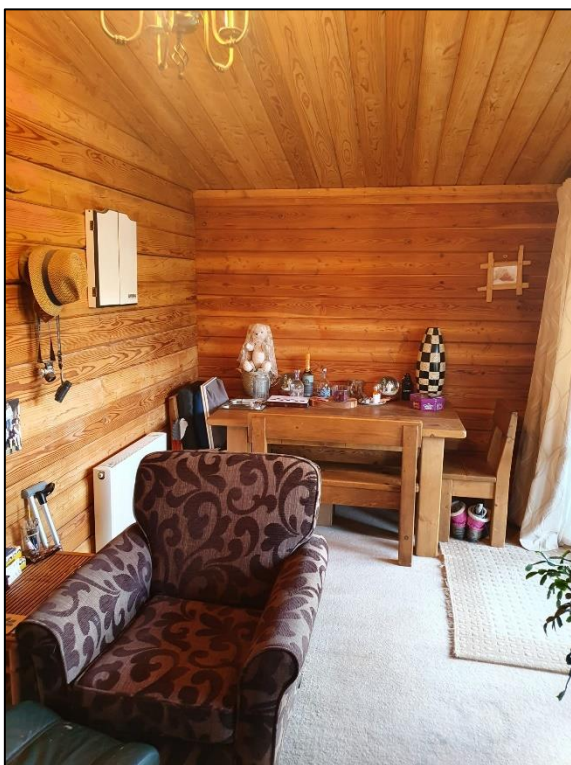
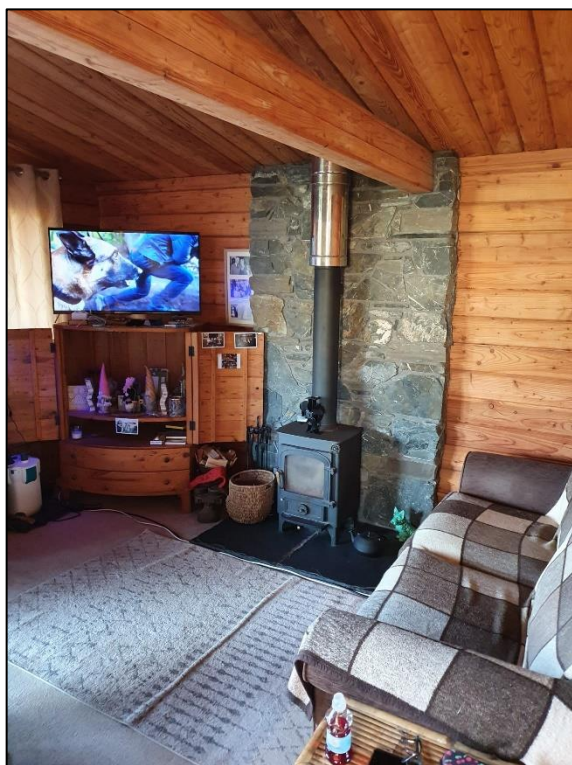
**87 Loch Murray, Castle Cary Holiday Park, Creetown, Newton Stewart, DG8 7DQ**

40' x 20' original Polish log cabin with large decked area to the front side and rear. The cabin is situated on a fully enclosed plot with greenhouse, log stores and shed. There is a large veranda to the front perfect for taking advantage of the beautiful open views over the Loch and Woodland beyond. Feature log burning stove with decorative stone faux chimney and slate hearth. Fully fitted kitchen with integrated appliances, 2 Bedrooms with Solid wood beds . Fully tiled bathroom with corner shower enclosure and power shower, large utility room with ample storage. Fully double glazed with LPG Gas central heating. Many extras included, viewing is highly recommended. (Please Note that Castle Cary is a Holiday Park and holiday homes can only be used on a seasonal basis either 1<sup>st</sup> March – 31<sup>st</sup> October or 1<sup>st</sup> March to 31<sup>st</sup> January. Full details of the park rules and guidelines can be obtained by contacting the Park).



Access through wooden gate into fully enclosed garden area with log store and steps up to a large front decking area with veranda. Twin double glazed patio doors leading into...

**Open Plan Kitchen/Living Area - 5.58m x 4.2m widening to 4.32m Approx.**



Open plan area with carpeted floor, radiator, front facing twin double glazed patio doors and window with open views to the Loch and woodlands beyond. Feature log burner with decorative stone chimney and slate hearth. Dining area with solid wooden table, 2 chairs and bench. Radiator, ceiling light, open through to...

### Kitchen Area



Fully fitted kitchen with tiled floor and walls. Range of base and wall cupboards in white finish with stainless steel handles and contrasting dark worktops. Side facing window with track of wall lights above. Integrated Whirlpool dishwasher, gas hob and electric oven. Wall mounted wooden spice rack. Access from kitchen to hallway with fully tiled floor, ceiling lights and door providing access to rear decked area . Access to...

**Utility Room - 2.1 x 1.57m Approx.**

Utility room housing the Wiessman boiler, wooden flooring, space and plumbing for washing machine. Beko 1100 washing machine, Hotpoint condenser dryer, microwave and fridge freezer (to be included). Carbon monoxide detector, built in shelving unit and coat hooks with ample storage.

Access from the Hallway to...

**Bedroom 1 - 3.31m x 2.1m Approx.**



Fully carpeted bedroom with Radiator, solid wood 4'6 Bed and matching bedside cabinet. Rear facing double glazed window, wall light and built in storage unit with hanging rail and shelves.

From the Hallway access to...

### **Bedroom 2 - 3.3m x 2.1m Approx**

Fully carpeted bedroom with solid wood 3'3" bunk beds with matching bedside cabinet. Built in hanging rail, wall light, radiator and rear facing double glazed window. From the Hallway access to...

### **Bathroom - 2.1 x 1.94m Approx.**

Fully tiled bathroom comprising white WC, WHB and corner shower enclosure with power shower. Tiled floor, chrome heated towel rail, wall mounted mirrored double vanity cupboard, wall light, extractor fan and side facing window. Wooden towel storage unit with drawers.



### **Outside Area**

The cabin benefits from decking to the front, rear and side with a large overhanging veranda to the front. Boundary fencing to all sides with fully enclosed garden area comprising a range of trees and bushes. There is a log store to the front with greenhouse and shed to the rear and further log store and gas bottle storage area. (2 x full 47kg Calor gas bottles will be included in the sale).

### **Notes**

The following items will be included in the sale:

Sofa Bed and Armchair in the Sitting Room.

Large Wooden Dining Table with bench and 2 chairs.

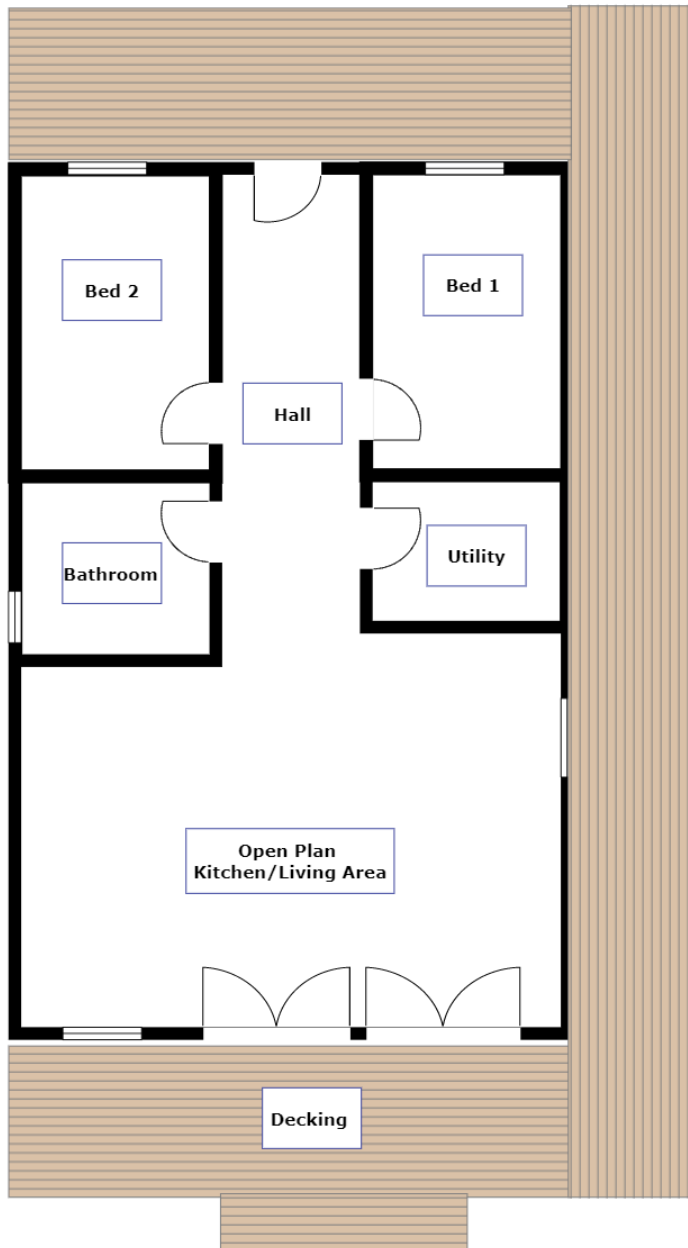
The Washing machine, dryer, fridge freezer and microwave in the utility.

The Wooden bed, bunks and bedside cabinets in the Bedrooms as well as the storage unit with hanging rail.

The towel storage unit and vanity cupboard in the bathroom.

All light fittings and curtains will be included.

It is also understood that the carpet in the Sitting Room area will be replaced prior to sale.



### Disclaimer

Please note that although every care has been taken when compiling these particulars, no warranty is given in this respect, it is the responsibility of the individual to satisfy themselves regarding any points arising from them. Potential purchasers should satisfy themselves as to the working condition of all systems and appliances which are untested and sold as seen. The photographs are for illustrative purposes only and may demonstrate only the surroundings. They are not to be taken as an indication of the extent of the property or of what is included in the sale. Where measurements are provided these are approximate only.

**Castle Cary Holiday Park, Creetown, Newton Stewart, DG8 7DQ**

**01671 82064.**

[castlecarycaravans@gmail.com](mailto:castlecarycaravans@gmail.com)

[www.castlecary-caravans.com](http://www.castlecary-caravans.com)